

# A Badging System for Reproducibility and Replicability in Remote Sensing Research

Alejandro C. Frery, *Senior Member, IEEE*, Luis Gomez, *Senior Member, IEEE*, and Antonio C. Medeiros

**Abstract**—Remote Sensing is both an active research area and the source of valuable information for decision-making. Many actors play a fundamental role in Remote Sensing, from industry (public or private) to large or small research groups. From that intensive activity, methods, algorithms, and techniques are continuously published or broadcasted through papers, conference presentations, repositories, patents, standards, and other means. The consumers of that information need it to be readily available and dependable. Reproducible research can handle those needs. In this paper, we discuss two concepts: reproducibility and replicability in the context of Remote Sensing research. We propose a badging system suited to the specifics of the Remote Sensing community. Such a system aims at both recognizing the level of the reproducibility of the research, and to help increase its visibility. We show examples of reproducible research and provide clues to make easier the transition to the inevitable new times that embrace contemporary Science and Technology.

**Index Terms**—Reproducibility, Replicability, Remote Sensing

## I. RATIONALE

**R**EPRODUCIBILITY is at the core of experimental sciences. It is also a basilar element of scientific integrity. The advent of data science is leading to new requirements and practices able to cope with the challenges posed by vast volumes of data, often of dynamic nature.

New grounds for Reproducible Research were set before the widespread use of deep learning and other massively data-based techniques.

Reproducible research has many benefits but also many challenges, and the ones related to software are of utmost importance.

Most Remote Sensing papers support the evidence of the proposed research by computational codes of medium or high complexity. More often than not, while not bearing in mind the reproducibility of the research done, codes are developed under the philosophy of “getting just results for the paper,” and then, they will rest in hard drives. It is frequent that, even the ones that implemented the codes can not execute them after some time has passed.

Among the efforts made towards building Remote Sensing Reproducible Research environments, one may mention Code

Ocean and GRSS Remote Sensing Code Library. These two initiatives belong to the IEEE scientific ecosystem.

However, is this enough for sound Science in Remote Sensing? We do not think so. Balz and Rocca [1] conducted an online survey on focused on experienced scientists, including editors and associate editors, that are active in the scientific publication process in the field of SAR – Synthetic Aperture Radar Remote Sensing. With 250 responses, of which only one did not complete the survey, they concluded that 75 % of the respondents encountered problems when trying to reproduce or replicate results from works published in some of the major Journals of the area.

Many authors continuously strive to disseminate their research findings in such a way that any user will be able to validate them at a later stage. Those ways include the proposal of software architectures, the use of open data, FLOSS (Free/Libre Open Source Software), and other initiatives.

Barba [2] identifies several usages of the terms “Reproducibility” and “Replicability,” and also the emergence of the term “Repeatability,” among others. The work by Fidler and Wilcox [3] discusses the use of those terms, surveys meta-analyses that characterize the reproducibility crisis, address epistemological aspects of reproducibility and its value in Science, and, finally, comment upon initiatives to alleviate such crisis.

We will discuss two core concepts: Reproducibility and Replicability in the context of Remote Sensing research. Such simplification aims at arriving at the suggestion of good scientific practices, and a badging system for the Remote Sensing publication ecosystem.

We will use the metaphor of dwarfs standing on the shoulders of giants which, in the words of Isaac Newton [4], is

If I have seen further, it is by standing on the shoulders of Giants.

Reproducibility consists of allowing the whole community to reach the researcher’s shoulders. Replicability grants the community to stand on the researcher’s shoulders.

Scientific work is reproducible if other researchers can obtain the data and the code and, effortlessly, obtain the same products (analyses and reports). Scientific work is replicable if it reported in such a way that other researchers can perform similar studies and arrive at compatible conclusions.

Quoting Ref. [5]:

a promise in a published paper to make code and/or data “available upon request” is not a reproducible practice: digital artifacts should already be in a suitable repository.

A. C. Frery is with the School of Mathematics and Statistics, Victoria University of Wellington, 6140 New Zealand, and with the Key Lab of Intelligent Perception and Image Understanding of the Ministry of Education, Xidian University, Xi’an, 710126 China (e-mail: alejandro.frery@vuw.ac.nz).

Antonio C. Medeiros is with the with the *Laboratório de Computação Científica e Análise Numérica* – LaCCAN, Universidade Federal de Alagoas, Maceió, 57072-900 Brazil (e-mail: antoniomedeiros@laccan.ufal.br).

Luis Gomez is with the Universidad de Las Palmas de Gran Canaria, 35017 Spain (e-mail: luis.gomez@ulpgc.es).

Manuscript received XX, accepted YY.

We, thus, believe that the Remote Sensing community needs to adhere to good practices of reproducibility and replicability. In this line, we propose a badging system that recognizes works that, fully or partially, adhere to such practices.

The remainder of the paper analyses a journal, a scientific society, and a platform that, implicitly or explicitly, use badging systems (Section II). Section III assesses three platforms available through IEEE that promote reproducibility, but not the point of leading to Remote Sensing fully reproducible research. Then, in Section IV, we propose a badging system that, although instantiated for the IEEE Geoscience and Remote Sensing journals, could be applied to other venues. Section V briefly describes tools that may support this initiative from the researchers' side. Section VI comments three of the major challenges this initiative may face.

## II. BADGING SYSTEMS

The IPOL Journal – Image Processing On Line [6] is a noteworthy example of reproducibility and replicability. In its own words, IPOL

is a research journal of image processing and image analysis which emphasizes the role of mathematics as a source for algorithm design and the reproducibility of the research. Each article contains a text on an algorithm and its source code, with an online demonstration facility and an archive of experiments. Text and source code are peer-reviewed, and the demonstration is controlled. IPOL is an Open Science and Reproducible Research journal.

We notice, though, that publishing in IPOL requires more work than publishing in other journals. The journal imposes strict conditions on the source code that, more often than not, take much time from the authors. Going down such a path does not seem adequate for the Remote Sensing community.

The scientific community is striving to recognize those articles that comply with reproducibility criteria by assigning badges. In the sequel, we mention two of those initiatives.

To date, sixty-seven journals use the Open Science badging system<sup>1</sup>. It consists of three levels: (a) Open Data, (b) Open Materials, and (c) Preregistered study; cf. Fig. 1 According to Munafò et al. [7], this practice increased by order of magnitude articles with open data in the *Psychological Science* journal.



Fig. 1: Open Science three-level badging system.

ACM – The Association for Computing Machinery has a five-level badging system<sup>2</sup>, illustrated in Fig. 2.

It is worth noting that levels 2a and 2b do not grant *per se* reproducibility. They just acknowledge that the authors made



Fig. 2: ACM five-level badging system.

their code available to reviewers and that it is functional and reusable. The Remote Sensing community should strive to attain, at least, level 2d.

We believe that a similar, even if more straightforward, badging system will have a great positive impact in the Remote Sensing community.

## III. PLATFORMS

Konkol et al. [8] discuss ten infrastructures for reproducible practices. The authors perform analyses from the viewpoints of publishers, editors, authors, readers and reviewers, and librarians. The work is an authoritative reference for choosing among the currently available options.

In the following, we will comment on two different approaches, both available through IEEE.

### A. Code Ocean

IEEE has teamed with Code Ocean to<sup>3</sup>

enable authors to further enhance the visibility and impact of their research by enabling them to share their code on Code Ocean so that readers can browse, view, run and experiment with the code. Readers can discover, browse, run, modify code, and input data to experiment, reproduce, and build on your research, all in the cloud, without any other setup or software license.

Code Ocean currently supports C/C++, Fortran, Java, Julia, Lua, MATLAB, Octave, Perl, Python, R, and Stata in most available versions. It, thus, covers the major programming languages in which the Remote Sensing community develops its research.

The service is available to authors of already accepted papers, so it cannot be integrated into the review process.

### B. Data Port

IEEE describes DataPort<sup>TM</sup> as<sup>4</sup>

a valuable and easily accessible data platform that enables users to store, search, access and manage data. The data platform is designed to accept all formats and sizes of datasets (up to 2 TB), and it provides both downloading capabilities and access to datasets in the Cloud. IEEE DataPort<sup>TM</sup> is a universally accessible web-based portal that serves

<sup>1</sup><https://cos.io/our-services/open-science-badges/>

<sup>2</sup><https://www.acm.org/publications/policies/artifact-review-badging>

<sup>3</sup><https://ieeexplore.ieee.org/Xplorehelp/#/faqs/code-ocean#what-is-ieee-xplore-code-ocean>

<sup>4</sup><https://ieee-dataport.org/about-ieee-dataport>

four primary purposes: (1) Enable individuals and institutions to indefinitely store and make datasets easily accessible to a broad set of researchers, engineers and industry; (2) Enable researchers, engineers and industry to gain access to datasets that can be analyzed to advance technology; (3) Facilitate data analysis by enabling access to data in the AWS<sup>5</sup> Cloud and by enabling the downloading of datasets (4) Supports reproducible research.

The description concludes with a link between the technology and IEEE's mission:

IEEE DataPort™ is an online data platform created and supported by IEEE and supports IEEE's overall mission of Advancing Technology for Humanity.

This humanitarian connection is relevant, and we consider it a cornerstone of reproducibility. We go back to it in Section VI-C2.

### C. GRSS Code Library

The IEEE Remote Sensing Code Library – RSCD<sup>6</sup> is an on-line curated repository of software related to remote sensing missions, instruments, processing, and applications.

Software should be relevant to the theory, concepts, and techniques of science and engineering as applied to sensing the earth, oceans, atmosphere, and space, and the processing, interpretation, and dissemination of this information.

Its contents are reviewed, and accepted contributions receive a DOI (Digital Object Identifier). As such, RSCD is a significant player in the Remote Sensing reproducibility and replicability game.

## IV. PROPOSAL

In this section, we propose a badging system to identify works that comply with minimum requirements of reproducibility and replicability in Remote Sensing research. Fig. 3 shows the workflow for its implementation. This workflow is a functional and updated mapping of the “Compendium” schema proposed by Gentleman and Temple Lang [9].

### A. Requirements

1) *Web page*: The first requisite for being considered a Remote Sensing Reproducible Research (RSRR) paper is associating the manuscript to a universally accessible and informative web page containing:

- 1) Project identification (one project may host more than one paper; one paper may be hosted by more than one project)
  - a) Title
  - b) Participants
  - c) Summary
  - d) Funding information

- e) Start date, state (in preparation, active, finished)
- 2) Paper identification (if different from 1)
  - a) Title
  - b) Contact: the corresponding author
  - c) Abstract
  - d) PDFs of relevant versions, including information of its submission to repositories (arXiv, IEEE TechRiv, etc.), journal or conference
  - e) L<sup>A</sup>T<sub>E</sub>X and B<sup>I</sup>B<sub>T</sub>E<sub>X</sub> files, images, and plots
- 3) Computational platform (machine, model, operating system, software, libraries, and versions)
- 4) Code (with comments)
- 5) Data
- 6) Which software components are FLOSS or free (including operating system)?
- 7) Provide precise instructions and examples about:
  - a) How to install and run the code;
  - b) How to read and modify the data;
  - c) How to generate the plots, images (where they improved for visualization? how?), and tables (rounding, truncating, etc.)

Most researchers can produce a basic web page. Bear in mind that basic web pages are likely to attract users, and they suffice to enrich the visibility of the research.

2) *Experimental design*: Many studies rely on the information provided by samples; few of them detail the procedure with which they were collected. A reproducible study should, besides providing the samples used, state the following:

- 1) objective criteria set *a priori* for sample collection;
- 2) number of samples, sample size, and descriptive statistics for the aggregated data;
- 3) objective criteria for sample selection and data imputation.

Stochastic simulation is at the core of randomized algorithms, for instance, Monte Carlo experiments. In order to make such algorithms reproducible, apart from the information in Section IV-A1, item 3, the authors must inform the pseudo-random number generator and the seeds employed.

Science is not only made of positive results. Sticking to this path may restrict the outcomes to confirmatory studies, avoiding those lines of research that do not produce immediately publishable results. Scientific honesty requires telling the whole story, starting from clearly defining the research protocol [10]. The research course may change along with the work, but telling the whole story adds more to the scientific knowledge that reporting only the evidence and the conclusions that are aligned with the starting hypotheses.

3) *Open data*: Open data can be accessed, used, and shared by Governments, businesses, and individuals. Open data should be stored in widely accessible and persistent repositories, in standard, machine-readable formats. Please notice that Excel<sup>®</sup> spreadsheets do not comply with this requirement; use Comma-Separated Values (with .CSV extension) instead. Although Open data are not necessarily free data, the authors must at least provide a minimum of free samples, and the tools to read and export them to freely available computational platforms.

<sup>5</sup>Amazon Web Services

<sup>6</sup><http://www.grss-ieee.org/publication-category/rscl/>

4) *Free/Libre Open Source Software (FLOSS)*: FLOSS source code is licensed free of charge, encouraging modifications and improvements.

Notable FLOSS platforms for Remote Sensing research are R<sup>7</sup> (for statistical computing and production of high-quality graphics), Python<sup>8</sup> (an interpreted, object-oriented, high-level programming language with dynamic semantics), GNU Octave<sup>9</sup> (an array-programming oriented language). The European Space Agency – ESA freely distributes SNAP – SeNtinel’s Application Platform<sup>10</sup>. SNAP, developed in Java and Python, is intended for interactive image visualization and analysis, but it also allows scripting and software extension with new functionalities. Moreover, ESA promotes STEP, a community platform for accessing the software and its documentation, communicating with the developers, dialoguing within the science community, promoting results and achievements as well as providing tutorials and material for training scientists using the Toolboxes. All platforms mentioned in this section have similar communities.

5) *Code*: Providing the code that transformed data into knowledge is a cornerstone in Remote Sensing Reproducible Research. This sharing requires lots of generosity and a change of mindset, but it is fundamental for the advancement of Science.

Researchers are benefited from the assistance of well-trained programmers (software engineers) that make software’s issues simpler. Nevertheless, in other situations, researchers must prepare the codes by themselves, and this is not an easy task. Decisions such as selecting the most appropriate tool (C?, Python?, on Windows or Linux?) or what public libraries to use are not trivial either.

Therefore, among others, software challenges related to reproducibility and replicability can be summarized as follows:

- properly select the best software in terms of efficiency, to support the work;
- properly select the best software to be easily used, updated, and reported;
- make the software as easy to use as possible.

Note that software efficiency is closely related to the hardware and operating system on which it runs. Therefore, the implementation must be designed aiming at its easy and fast adaptation to new coming machines and environments. This is especially true for the challenges that the deep learning paradigm brings into Remote Sensing research.

We urge authors to adhere to good practices as, for instance, those discussed in Ref. [11, Chapter 7]. Bear in mind that sharing code aims at allowing others to use it, so you must provide running examples, and comments that allow your readers to make the necessary changes, for example on how to change the input data.

For instance, for C, Java, Python programmers, the GNU General Public License tool, Doxygen<sup>11</sup>, easily generates documentation from flat sources and it also provides visual

representations of the code in a hierarchical attractive and very useful way.

6) *Text*: Zobel’s book [12] discusses general guidelines of adequate scientific writing. We add elements that promote reproducibility and replicability.

The review of the literature, which allowed the authors to draw the state-of-the-art over which they built their research, should also be reproducible. The systematic review approach aims at being reproducible, auditable, and transparent [13]. Life sciences have expertise in conducting such reviews, while the Remote Sensing community is beginning to adhere to such practice.

The methodological part of the text is essential for reproducibility. It must clearly state all the assumptions, details of the context, materials, and procedures the authors employed during their research. A good Methodology section is a roadmap for reproducing exactly the same study and, ideally, obtaining the same results.

In the same manner, the authors identified missing knowledge while performing the analysis of the state-of-the-art and, with it, made a contribution, their work should point at future enhancements, improvements, and advances. The more straightforward these remarks are, the easier it will be for other researchers (and for the authors themselves) to continuing contributing to this line of research. This analysis belongs to the Discussions section of the manuscript.

Since the source L<sup>A</sup>T<sub>E</sub>X and B<sup>B</sup>T<sub>E</sub>X will be available, the authors should be generous with comments. Such additional information will not make it to the final published work but can be useful to those readers that will use this material.

7) *Additional artifacts*: Current collaborative research usually produces artifacts that may contribute to the replicability of the research. Among them, we may mention Mind Maps, Project Management files, Wikis, and a bug tracking database as Bugzilla. All these elements, well documented, may be added to the paper repository for optional scrutiny and use.

## B. Implementation

GRSS should implement a Remote Sensing Reproducibility Committee for each of its (currently) four journals, namely: IEEE Transactions on Geoscience and Remote Sensing, IEEE Geoscience and Remote Sensing Letters, IEEE Geoscience and Remote Sensing Magazine, and IEEE Journal of Selected Topics on Applied Earth Observations and Remote Sensing. This committee will act solely on accepted papers for which the authors have requested the RSRR Badge. The role of such committee is solely verifying the reproducibility of the article and, thus, the expertise of their members might also be from outside the Remote Sensing community.

The assessment process has three possible outcomes:

- **Fully RSRR**: the article is fully compliant with the reproducibility and replicability criteria.
- **Partially RSRR**: the article is partially compliant with the reproducibility and replicability criteria, as it does not use exclusively FLOSS software.
- **No badge**: the manuscript does not comply with at least one of the mandatory reproducibility requirements.

<sup>7</sup><https://www.r-project.org/about.html>

<sup>8</sup><https://www.python.org/about/>

<sup>9</sup><https://booki.flossmanuals.net/command-line/gnu-octave.html#>

<sup>10</sup><http://step.esa.int/main/toolboxes/snap/>

<sup>11</sup><http://doxygen.nl>

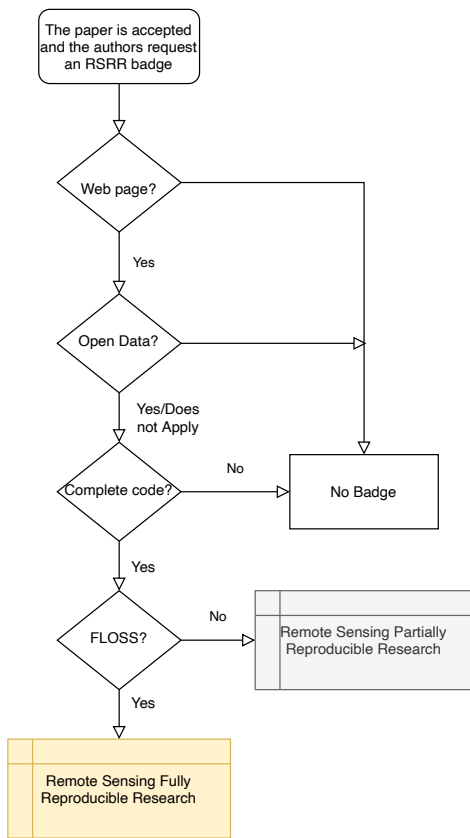


Fig. 3: Flowchart of the badge awarding process.

Fig. 3 illustrates the proposed badge awarding process. Some of the direct benefits for papers published under the RSRR Badge are:

- the paper will display the recognition (both for the paper printed and for the online versions),
- the paper will be specially promoted after publication by the journals,
- the journal will enforce, in each cross-referenced database, that the paper has that badge recognition.

The work by Santana-Cedr s et al [14], for instance, qualifies for a Remote Sensing Partially Reproducible Research.

As authors' obligation, a pre-requisite to obtaining the badge is the acknowledgment that the paper is reproducible in all the terms for at least five years and that the material has permanent and global identifiers, e.g., DOIs.

## V. TOOLS

Starting well saves lots of time. We make recommendations that may save time and effort. All of them are either free or offer a free operational version, which usually suits the needs of relatively small Remote Sensing reproducible research projects.

### A. Doodling

Doodling is an important stage to unlock creativity in a controlled manner. We suggest using FreeMind<sup>12</sup>, or any other mind map tool, for this purpose.

<sup>12</sup>[http://freemind.sourceforge.net/wiki/index.php/Main\\_Page](http://freemind.sourceforge.net/wiki/index.php/Main_Page)

Figure 4 shows the mind map product of such a doodling stage. It served as a guide for the structure of this paper.

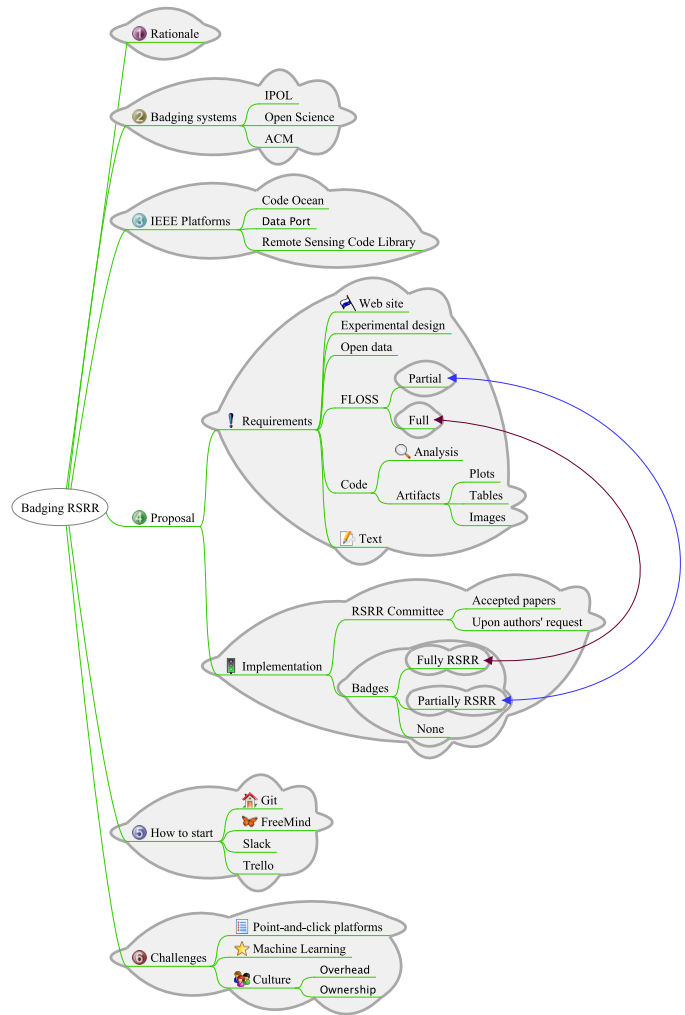


Fig. 4: The mind map that led to this paper.

Having such an editable visual structure, along with properties and relationships between elements, helps to remind and documenting the progress of the project.

### B. Git repository

We assume in this section that the reader uses  $\text{\LaTeX}$  and  $\text{\BibTeX}$ .

The main idea consists in having a single repository for all the scientific texts: theses, reports, articles, letters, reviews, and miscellaneous documents.

Fig. 5 illustrates the recommended basic structure for a repository holding several  $\text{\LaTeX}$  files (or projects), along with their associated data and code.

Every directory may contain specific subdirectories. For instance, Data may contain CSV, text, and other directories with specific data files.

Notice that there is a single  $\text{\BibTeX}$  file (with extension .bib in the Common directory).  $\text{\BibTeX}$  references can be split into several files, but these files should be common to all projects. This avoids outdated and redundant bibliographic databases.

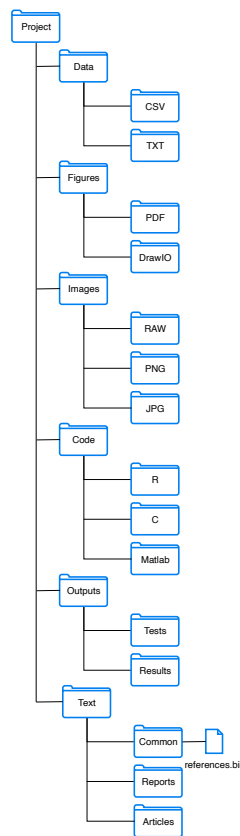


Fig. 5: Recommended structure of a repository for scientific projects.

Every article should be in its directory. Avoid using the name of the journal where the authors will submit the work for the directory and document names, as the destination may change along the process.

Data, figures, images, and code should be common to all projects, as one typically reuses them. Inform in your  $\text{\LaTeX}$  code the source of each figure, for instance with a comment of the form `%% The source is in ../../Figures/DrawIO/DirectoryStructure.drawio`. This will help the review process and the communication between authors. All references to source files must use relative paths, e.g., `../../more-path/figures`, and `../../more-path/video_demos`. This applies also to codes (`../../more-path/my_personal_library`).

The Outputs directory should contain both intermediate, but interesting, results (in Tests), and those results that made it into the final report (in Results). Proper documentation is fundamental to help the author, his or her team, and others to catch up from where he or she stopped.

Check Ref. [15] for a naming convention and suggestions for revision handling of submitted manuscripts.

### C. Communication

Most of the research in Remote Sensing is collaborative and involves two or more authors. This is mostly due to the interdisciplinary nature of the area, which requires comple-

mentary competencies. Communication in such a scenario is of paramount importance.

Although email is a powerful tool, synchronous communication is often required. WhatsApp and WeChat are commonplace for real-time exchange of ideas, but they do not offer either the tools or the organization required for productive and time-saving technical conversations.

Slack<sup>13</sup> serves this purpose well. It organizes conversations in channels, connects with other applications (Google Suit, meetings, Github, polls, etc.) promoting, thus, focus and persistence.

### D. Task management

We have stressed the importance of using a Kanban-style management method for building a project [16]. Such a method is also recommended for simple task management. Trello<sup>14</sup> usually meets well the needs of organizing and maintaining a Remote Sensing reproducible project. However, a more sophisticated tool, such as ProjectLibre<sup>15</sup> is highly advisable for projects which involve several participants, resources, deliverables, and deadlines.

Fig. 6 shows the structure of a Scientific Canvas in Trello, freely available at <https://trello.com/b/C747M1GX>. Cards are organized in lists, and lists in groups. Each group is identified by a color: “Why?” in purple, “What?” in yellow, “Who?” in brown, “How?” in green, “When and how much?” in pink. This board can be copied and assigned to a team, whose leader can assign tasks (cards), with deadlines, reminders, and several other utilities. Details of such an organization, which is inspired by the canvases discussed in Ref. [17], were presented in [16].

As Trello keeps track of every single modification, it becomes a useful resource when it comes to reproducibility.

## VI. CHALLENGES

### A. Point-and-click software

The ease of use of point-and-click software based on predefined menus is undeniable. Such platforms may conspire against reproducibility, in any case. A fully reproducible process, if based on such a platform, must state step-by-step the procedure. For this reason, it is advisable to prefer software that allows coding.

### B. Machine Learning

Machine learning in general, and CNNs – Convolutional Neural Networks in particular, have seen an extraordinary increase in popularity in the Remote Sensing community [18] lately. Any reproducible approach must pay special attention to what this so efficient machine learning approach is capable of getting from data (especially from Big Data) [19].

Some of the challenges that these studies pose for their reproducibility are random initialization and the need for GPU resources.

<sup>13</sup><https://slack.com/>

<sup>14</sup><https://trello.com/>

<sup>15</sup><https://www.projectlibre.com/>



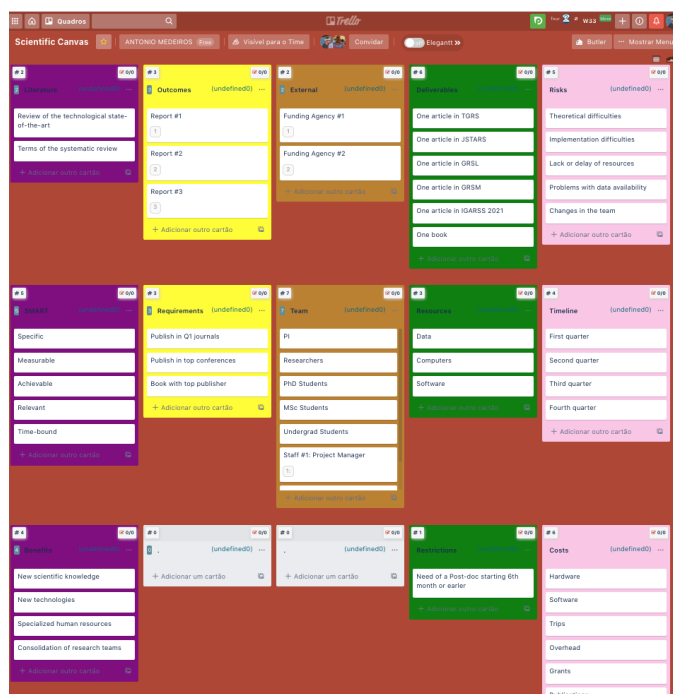


Fig. 6: A Trello implementation of a Scientific Canvas.

## C. Culture

1) *Overhead*: Most experienced researchers frown upon adhering to new practices, especially if they are already successful. It is worth noting that many scientific practices are changing, and adaptation is a sign of intelligence, if not a requirement for survival.

The learning curve of good reproducibility and replicability practices is not steep, and they can be adopted gradually. We have noticed that students and young researchers may be the drivers of this change, which, once in place, facilitates high-quality research.

We, thus, consider that overhead is small, limited to the initial stage of the adoption of the practices, and that it returns in the form of better recognition and smoother work.

2) *Ownership*: Licensing of scientific outcomes is a delicate matter. It grants that authors', journals', and Institutions' copyrights. Ref. [20] analyzes some of the possibilities.

Creative Commons licenses<sup>16</sup> offer to creators specific royalty-free uses for their work. The protection covers the copy and distribution of the material in any medium or format. GNU General Public License (GPL)<sup>17</sup> is commonly used nowadays by most CNU programs to protect software (both, source and compiled files).

We conclude reminding that The Universal Declaration of Human Rights<sup>18</sup>, in its Article 27, states that

Everyone has the right freely to participate in the cultural life of the community, to enjoy the arts and to share in scientific advancement and its benefits.

<sup>16</sup><https://creativecommons.org/licenses/by-nd/3.0/us/>

<sup>17</sup><http://www.gnu.org/licenses/licenses.en.html#GPL>

<sup>18</sup><https://www.un.org/en/universal-declaration-human-rights/>

Adhering to reproducibility and replicability, the Remote Sensing community will give a step in this direction.

This work is available at <https://acfrery.github.io/Grading-Reproducibility-in-Remote-Sensing-Articles/>. The repository can be copied with its contents, or only as a template for other projects.

## DISCLAIMER AND NON-AFFILIATION

The opinions expressed in this presentation are solely those of the presenter and not necessarily those of IEEE, IEEE Geoscience and Remote Sensing Society and its affiliates.

All product and company names are trademarks or registered trademarks of their respective holders. The use of them does not imply any affiliation with or endorsement by them.

## ACKNOWLEDGMENTS

The authors would like to thank CNPq and Fapeal (Brazil) for partial support of this work.

## REFERENCES

- [1] T. Balz and F. Rocca, "Reproducibility and replicability in SAR remote sensing," *IEEE Journal of Selected Topics in Applied Earth Observations and Remote Sensing*, vol. 13, pp. 3834–3843, June 2020.
- [2] L. A. Barba, "Terminologies for reproducible research," 2018. [Online]. Available: <http://arxiv.org/pdf/1802.03311v1>
- [3] F. Fidler and J. Wilcox, "Reproducibility of scientific results," in *The Stanford Encyclopedia of Philosophy*, winter 2018 ed., E. N. Zalta, Ed. Metaphysics Research Lab, Stanford University, 2018. [Online]. Available: <https://plato.stanford.edu/archives/win2018/entries/scientific-reproducibility/>
- [4] I. Newton and R. Hooke, "Isaac Newton letter to Robert Hooke," 1675. [Online]. Available: <https://digitallibrary.hsp.org/index.php/Detail/object/9792>
- [5] L. A. Barba, "Praxis of reproducible computational science," *Computing in Science & Engineering*, vol. 21, no. 1, pp. 73–78, Jan. 2019.
- [6] "Image Processing On Line." [Online]. Available: <http://www.ipol.im/>
- [7] M. R. Munafò, B. A. Nosek, D. V. M. Bishop, K. S. Button, C. D. Chambers, N. P. du Sert, U. Simonsohn, E.-J. Wagenmakers, J. J. Ware, and J. P. A. Ioannidis, "A manifesto for reproducible science," *Nature Human Behaviour*, vol. 1, no. 1, p. 0021, jan 2017.
- [8] M. Konkol, D. Nüst, and L. Goulier, "Publishing computational research – a review of infrastructures for reproducible and transparent scholarly communication," Jan. 2020. [Online]. Available: <http://arxiv.org/pdf/2001.00484v1>
- [9] R. Gentleman and D. Temple Lang, "Statistical analyses and reproducible research," Bioconductor Project, The Berkeley Electronic Press, Tech. Rep. Paper 2, 2004. [Online]. Available: <http://www.bepress.com/bioconductor/paper2>
- [10] "Tell it like it is," *Nature Human Behaviour*, vol. 4, no. 1, pp. 1–1, Jan. 2020. [Online]. Available: <http://dx.doi.org/10.1038/s41562-020-0818-9>
- [11] S. Oliveira and D. Stewart, *Writing Scientific Software: a guide to good style*. Cambridge, 2006.
- [12] J. Zobel, *Writing for Computer Science*, 2nd ed. Springer, 2005.
- [13] D. Tranfield, D. Denyer, and P. Smart, "Towards a methodology for developing evidence-informed management knowledge by means of systematic review," *British Journal of Management*, vol. 14, no. 3, pp. 207–222, Sep 2003.
- [14] D. Santana-Cedr s, L. Gomez, L. Alvarez, and A. C. Frery, "Despeckling PolSAR images with a structure tensor filter," *IEEE Geoscience and Remote Sensing Letters*, vol. 17, no. 2, pp. 357–361, Feb. 2020. [Online]. Available: <http://ctim.ulpgc.es/demo111/>
- [15] A. C. Frery, "How to successfully make a scientific contribution through IEEE Geoscience and Remote Sensing Letters," *IEEE Geoscience and Remote Sensing Letters*, vol. 12, no. 6, pp. 1167–1169, June 2015. [Online]. Available: <http://www.grss-ieee.org/publications/letters/submission-hints/>
- [16] —, "Successful scientific publishing: from the project to the advertising," IEEE GRSS Joint Hyderabad and Bangalore Chapters webinar, 2020. [Online]. Available: <https://ieeemeetings.webex.com/ieeemeetings/ldr.php?RCID=825b9854c01cd5f07190a96b50284234>

- [17] A. Osterwalder and Y. Pigneur, *Business model generation: a handbook for visionaries, game changers, and challengers*. John Wiley & Sons, 2010.
- [18] M. Reichstein, G. Camps-Valls, B. Stevens, M. Jung, J. Denzler, N. Carvalhais, and Prabhat, "Deep learning and process understanding for data-driven Earth system science," *Nature*, vol. 566, no. 7743, pp. 195–204, Feb. 2019.
- [19] R. Isdahl and O. E. Gundersen, "Out-of-the-box reproducibility: A survey of machine learning platforms," in *2019 15th International Conference on eScience (eScience)*. IEEE, Sep. 2019. [Online]. Available: <http://dx.doi.org/10.1109/eScience.2019.00017>
- [20] V. Stodden, "The legal framework for reproducible scientific research: Licensing and copyright," *Computing in Science & Engineering*, vol. 11, no. 1, pp. 35–40, Jan. 2009.



**Alejandro C. Frery** (S'92–SM'03) received a B.Sc. degree in Electronic and Electrical Engineering from the Universidad de Mendoza, Mendoza, Argentina. His M.Sc. degree was in Applied Mathematics (Statistics) from the Instituto de Matemática Pura e Aplicada (IMPA, Rio de Janeiro) and his Ph.D. degree was in Applied Computing from the Instituto Nacional de Pesquisas Espaciais (INPE, São José dos Campos, Brazil). He is Professor of Statistics and Data Science with the School of Mathematics and Statistics, Victoria University of Wellington,

New Zealand, and holds a Huashan Scholar position (2019–2021) with the Key Lab of Intelligent Perception and Image Understanding of the Ministry of Education, Xidian University, Xi'an, China. His research interests are statistical computing and stochastic modeling.



**Luis Gomez** has Ph.D in Telecommunication Engineering in 1992, University of Las Palmas de Gran Canaria, SPAIN) is an Associate Professor since 1994 at the Department of Electronic Engineering and Automatic Control of University of Las Palmas de Gran Canaria. His current research interests include image processing (denoising, segmentation, classification) for Remote Sensing for SAR (Synthetic Aperture Radar) and PolSAR (Polarimetric Synthetic Aperture Radar) data. He is currently an Associate Editor of the IEEE Geoscience and

Remote Sensing Letters, and belongs to the Editorial Board of IPOL (Image Processing on Line, [www.ipol.im](http://www.ipol.im)). He researches at CTIM (Image Technology Center ([www.ctim.es](http://www.ctim.es))) and is an IEEE Senior Member.



**Antonio C. Medeiros** graduated in Meteorology from the Universidade Federal de Alagoas (2016). He is currently enrolled in MBA (Fundação Getúlio Vargas, Brazil) and MSc (Universidade Federal de Alagoas, Brazil) Programs. He is the Project Manager of *Laboratório de Computação Científica e Análise Numérica – LaCCAN* of the latter University. His research areas are Scientific Project Management, Risk Assessment, and Optimal Resource Allocation.